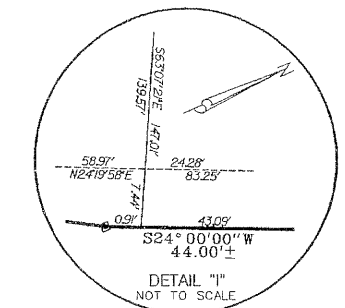
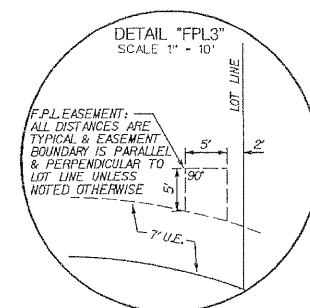
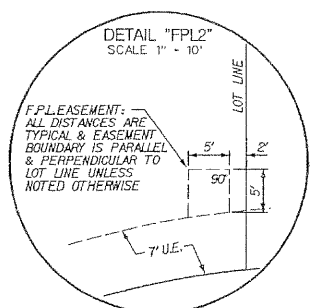
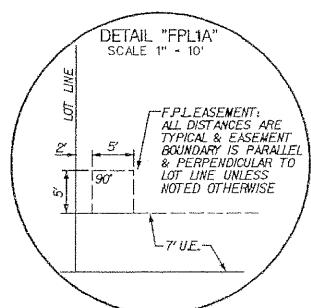
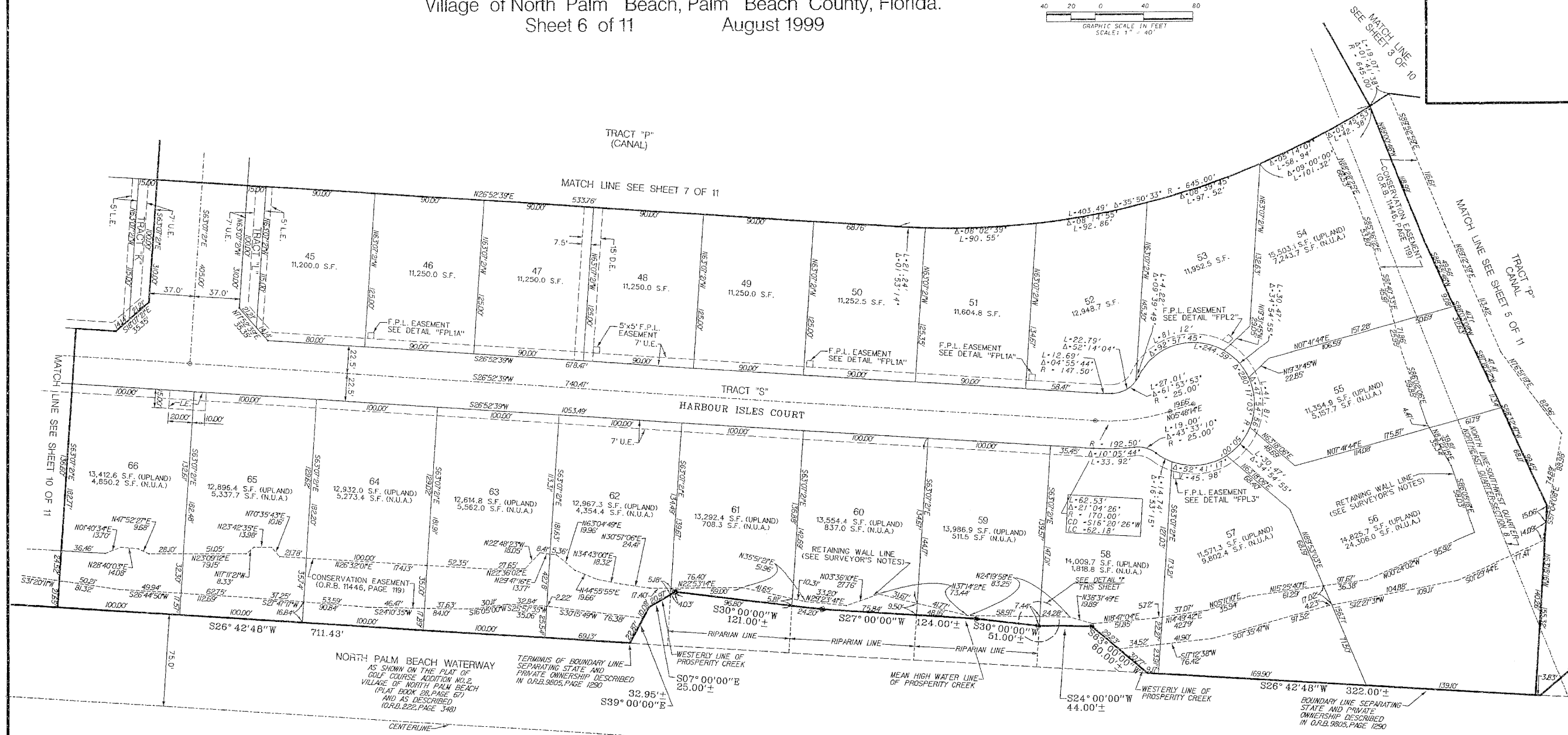
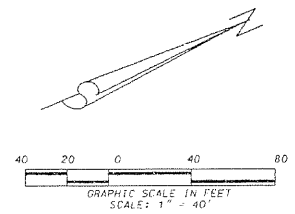


HARBOUR ISLES

Being a replat of Lots 1 through 5, Block 54,
Village of North Palm Beach, Plat No. 6, as recorded
in Plat Book 26 pages 10 through 12, and being
a portion of Section 8, Township 42 South, Range 43 East,
Village of North Palm Beach, Palm Beach County, Florida.

Sheet 6 of 11 August 1999

116



LIDBERG LAND SURVEYING, INC.

LB4431 675 West Indiantown Road, Suite 200, Jupiter, Florida, 33458 TEL. 561-746-8454

CAD. K:\JSTATION \ SECTION \ 08-42-43 \ 96-594 \ SHEET6.DGN	FB.	PG.	JOB 96-594
REF. K:\JSTATION \ SECTION \ 08-42-43 \ 96-594 \ 96-594.DGN	DATE	10/14/96	
OFF. R.W.	SHEET 6 OF 11	DWG. D96-594P	
CKD. D.C.L.			